



RE-DEFINING EDUCATION

INTERACTIVE FLAT PANEL-EDUCATION SERIES



GET READY FOR A *NEW VISION*

Interactive Flat Panel provides an ALL-IN-ONE solution for different educational needs. Effective and Interactive Class Sessions help in better learning and building good foundation for students.

- ▲ Boost student engagement
- ▲ Accommodate different learning styles
- ▲ Save and share lessons

Apart from making lesson delivery interesting, IFPs also help in: -

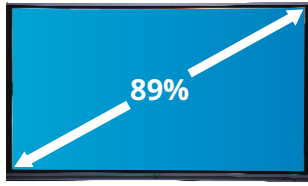
- ▲ Pre-Class - Lesson Preparation.
- ▲ During Class - Facilitate teacher-student interactions.
- ▲ Post-Class - Share discussed material/notes with class easily.

READY FOR CLASS



Interactive Panel

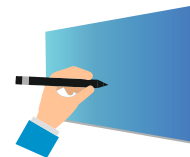
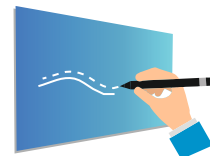
FEATURES



SIMPLE DESIGN

Immersive Display for Learning

- Narrow Bezel in a thin body at up to around 89% screen -to-body ratio.
- A purposeful front bezel design that helps students concentrate on the screen.



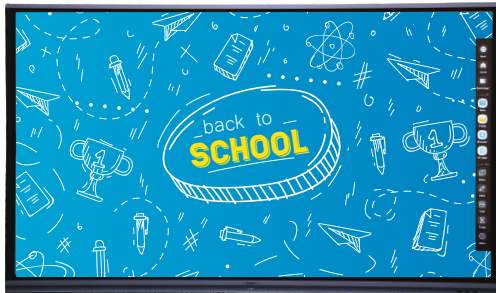
LOW PARALLAX

Reduced thickness of the air gap that makes your feel like writing on the paper



EYE CARE MODE

- Alleviate eye fatigue for long lasting teaching and learning



UHD DELIVERS CRYSTAL CLARITY

4K resolution that brings detailed vision in both operating systems



RESPONSIVE TOUCH

- 10ms response time catches your every thought.
- Windows Ink compatible



FUTURE-PROOF CONNECTIVITY

USB 3.0, HDMI Out

AVAILABLE SCREEN SIZES

65"

75"

86"



20 Points Touch
10 Points Writing



Android 8.0 System



Anti glare Glass
Mohs Level 7
Hardness



Inbuilt Speakers



HDMI Out



PC Module



Shared USB Ports



Wireless Screen
Sharing with up to
9 screens
simultaneously




PURPOSE- BUILT EDUCATION WHITEBOARD

Inspired by the real classroom scenes,
NOTE application is born for better immersive
learning experience.




SMART ILLUSTRATION
A re-invented whiteboard that recognises the hand drawing and offers a wide range of illustration options



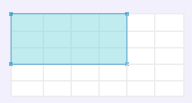
HANDY TOOLS
A ruler, set square or protractor at a single tip



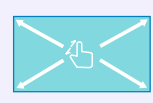
SHAPES RECOGNITION
Automatically straightens up the hand-drawn shapes



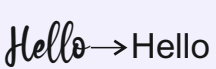
INSTANT STICKERS
Add reminders to the whiteboard and put them in a corner




SMART TABLE
Auto-adaptive height and width in each cell



BOUNDLESS CANVAS
Extends the canvas in all directions



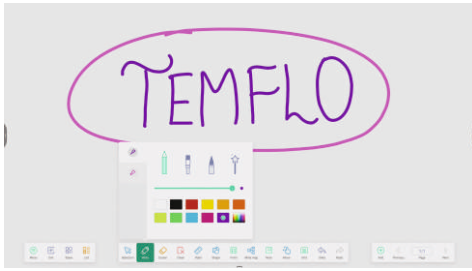
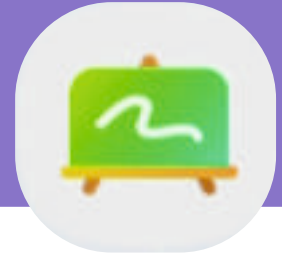
HANDWRITING RECOGNITION
Convert Handwriting to text to improve your board writing



SEARCH & DRAG
Search with whiteboard writing and drag the picture visual aids from the browser to the whiteboard .

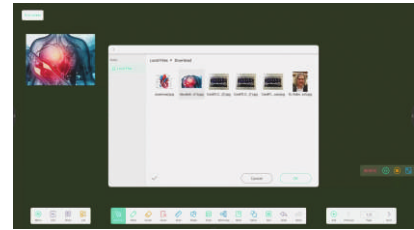
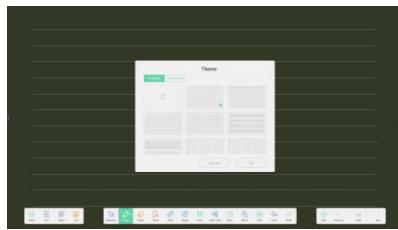
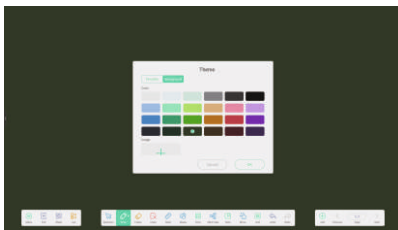
WRITING & ANNOTATION

Multiple pen and color choices for teaching needs

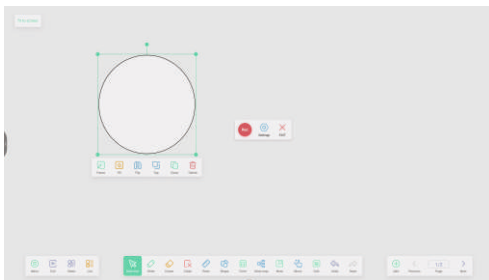


PERSONALIZE YOUR WHITEBOARD

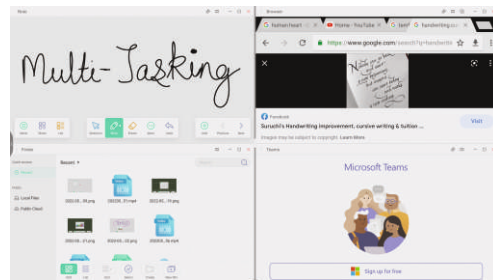
Change the background to your preferred colour, texture or even add a picture



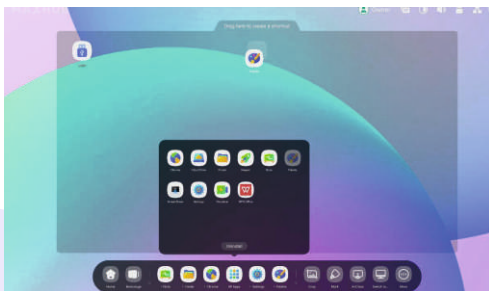
> MORE FEATURES OF THE PANEL



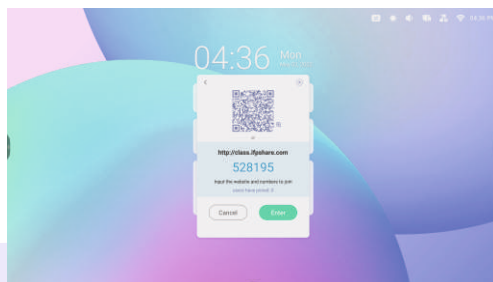
Screen Recording



Split View



Customisable Home Screen



Air Class

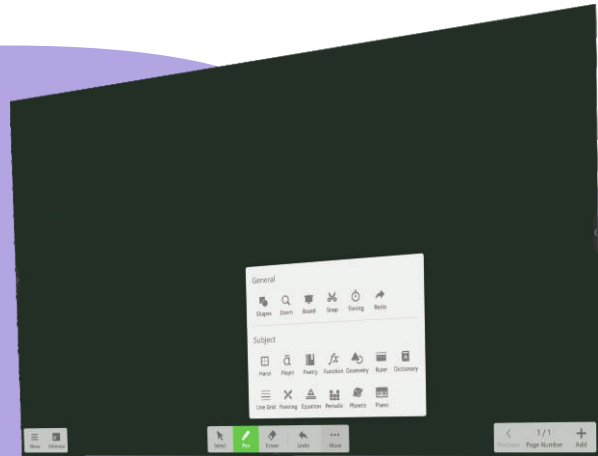


Easinote5

LESSON DELIVERY SOFTWARE

Easinote5 is a collaborative education whiteboard application for interactive displays.

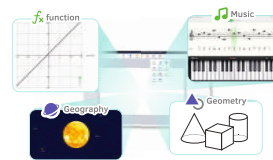
It is purposefully designed for teachers to engage students with compelling content.



CREATING INTERACTIVE CLASS



BOUNDLESS EDUCATIONAL TOOLS



Assorted tools for subjects like mathematics, geometry, music, geography, etc. Making class delivery more vivid than ever!

Shapes, tables, mindmaps.... more tools heal teachers delivery better classes

FOR BOTH CLASS PREPARATION & DELIVERY



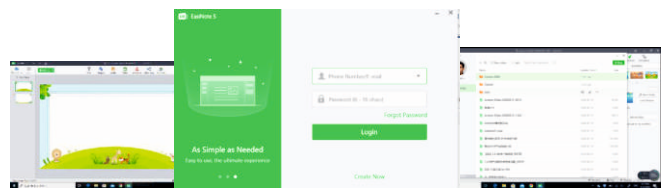
Teachers can make courseware on their computer and save it to the cloud*.

* The cloud saving function is not available for EasiNote 5 Lite.
* EasiNote 5 Lite is only available for Windows 10.



During class, EasiNote 5 can encourage student collaboration at the front of the class with features including subject tools, spotlights, timers and more.

SYNCHRONIZE FILE ANYTIME, ANYWHERE*



The cloud version of EasiNote 5 allows teachers creating their personal accounts, save courseware to cloud drive and synchronize file in real time. Click "Sync" then you can save every changes you've made to your file.

*Features mentioned in the page only refer to EasiNote 5 Cloud.

CONNECT

This software creates a Wi-Fi-based system for interaction between mobile terminal and IFP

- **Wireless Transmission**

Transmit files or pictures from mobile devices to IFP wirelessly

- **Remotely Control IFP**

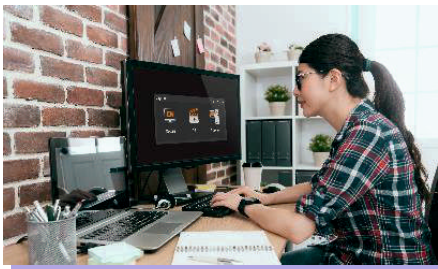
Teachers can click, drag, scroll, annotate and make comments on the screen via mobile device



CAPTURE



Online video and audio recording, editing and class recording...achieve them all via our software Capture



All-in-one Software

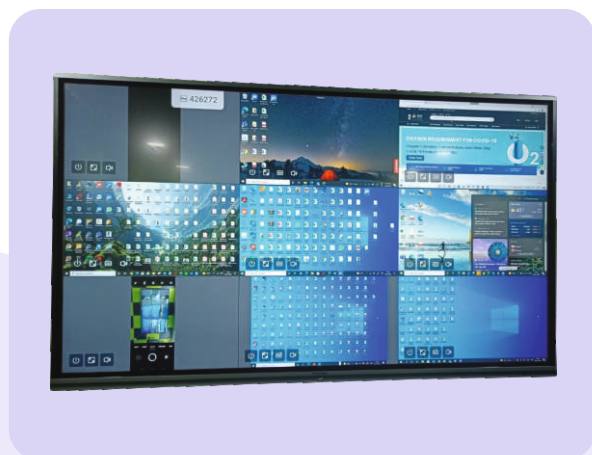
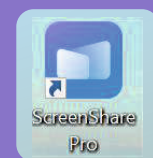


Record class delivery



Edit video and share

SCREENSHARE PRO



ScreenShare Pro allows participants to project their screens onto the interactive flat panel. BYOD (Bring Your Own Device) is now possible

It supports up to four students to share their screens from phones, tablets, PCs, or Macs.

Product Specification

Display Models (I65FA / I75FA / I86FA)

Size	65/75/86 inches
Display Ratio	16:9
Backlight	DLED
Resolution	3840 (H) X 2160 (V)
Viewing Angle	Horizontal 178, Vertical 178
Touch System	
Glass Material	Anti-glare tempered glass
Touch Technology	Infrared
Touch Point	20 points touch, 10 points writing
Writing Tools	Finger, Finger cover by glove, Opaque objects
Touch Accuracy	±1.5mm
Speaker	
Speaker Quantity	2
Power	2*12W
Display Ports	
HDMI IN	3
HDMI Out	1
VGA IN	1
USB 2.0	3
USB 3.0	3
USB Touch Output	2
RS232	1
LAN(RJ45)	1
AUDIO IN	1
Built-in Operating System	
CPU	Quad core Mali G51
RAM	3GB
ROM	32GB
Operating System	Android 8.0 embedded, supports slot-in PC module
PC Module(Optional)	
Operating System	Windows 10 LTSC
CPU	Core i5/i7
RAM	8GB/16GB
Storage	128GB/ 256GB
GPU	Intel HD Graphics
USB 3.0	4
USB 2.0	2
HDMI Out	1
Mic In	1
Headphone Out	1
Display Port	1
LAN	1
VGA OUT	1
Type C	1
Environment Requirement	
Power	100-240V~ 50/ 60Hz
Altitude	Below 5000 meters
Standby Power Consumption	0.5W

Available On



TEMFLO SYSTEMS PVT. LTD.

12/19 , Site-IV , Sahibabad Industrial Area, Sahibabad- 201 010, Delhi (NCR) India

Ph.- 120-4217441, 2774141 Email: info@temflo.co.in Web: www.temflo.co.in